



**PT. GLOBAL JAYA  
ELEKTRONIK**

PCB Assembly & Component Sourcing

# Company Profile

## Head Office

Jalan Raya Cukangalih No. 7

Kampung Ranca Buntu

Kecamatan Curug

Kabupaten Tangerang 15810

INDONESIA

t: +62 21 58980882

f: +62 21 58981008

w: [www.gje.co.id](http://www.gje.co.id)





## WHO ARE WE?

**PT. Global Jaya Elektronik (GJE)** is a privately owned company in the electronics industry which specializes in the assembly of electronics module devices. Our main products are PCB Assembly (the assembly of Printed Circuit Board- a thin board inside electronic devices which are used to connect electronic components to one another) and Component Sourcing (the supply of all kinds of electronic components for supporting the production of PCB Assembly).

We provide numerous services in PCB Assembly- from PCB design, PCB preparation, insertion of electronic components into PCB, soldering, functioning test and installing electronic modules into its housing.

We also offer various electronic components such as PCB, resistor, capacitor, tin-wire (jumper wire), tin, solder paste, solder mask etc.





# SMT MOUNTER



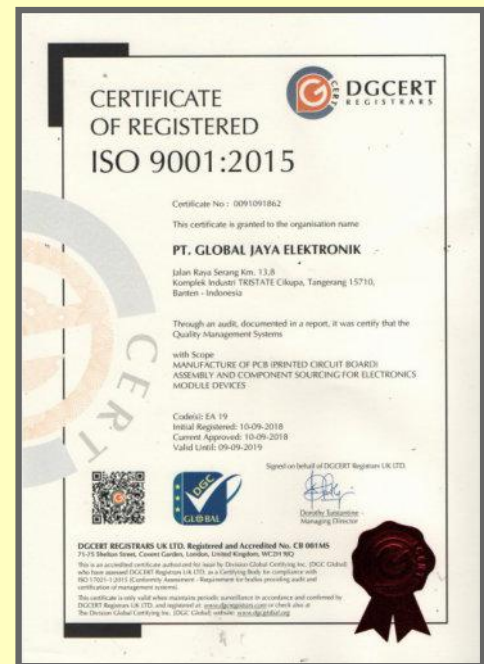
# WAVE SOLDERING

## WHY US?

Throughout the company's long history, PT. Global Jaya Elektronik has proven itself to Indonesia's electronic industries that we are a reliable and experienced company that specializes in PCB Assembly & Component Sourcing. PT. Global Jaya Elektronik believes in producing the highest quality products and we are proud to have been to serve Indonesia for over 20 years. With a professional, creative and dedicated team, we are committed to serve and prioritize our customer's interests and satisfaction.

Our products have met the quality standards of export with competitive prices and excellent quality. Our company provide service for PCB redesign or modifications and also PCB design consultations. We also guarantee on-time product delivery and offer excellent after-sales service to our customers.

Our professional management and production systems have been certified by ISO 9001-2015, we are certainly the right choice for those of you who need PCB Assembly & Component Sourcing. PT. Global Jaya Elektronik strives to produce excellent quality products and we will also continue to provide our best service in accordance with our motto, **"We Serve & Make Better"** .



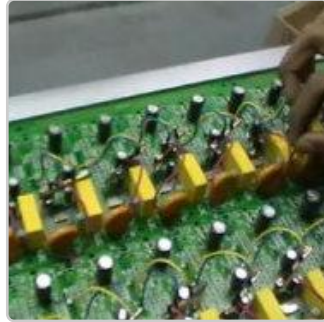


# PCB ASSEMBLY



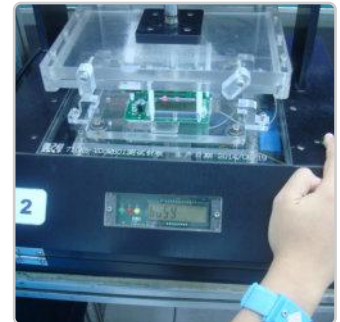
## Auto Process

Mounting electronic components with the use of robots.



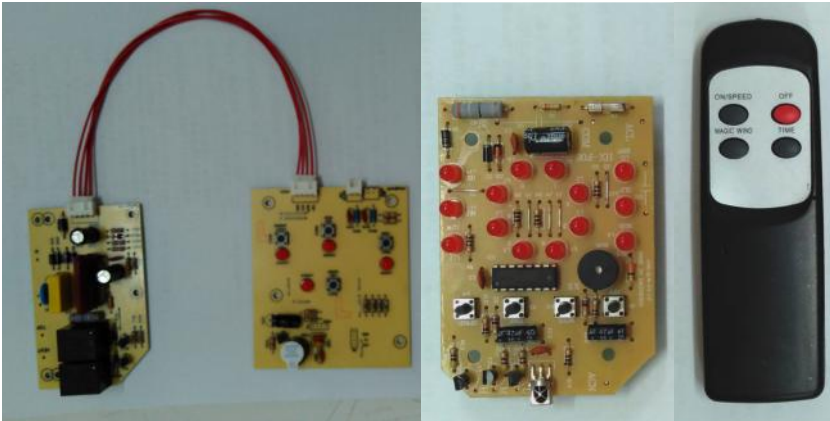
## Manual Insert

Manual mounting big electronic components



## Functioning Test

Simulation of products according to its functions



## Manufacturing

PCB manufacturing, components supplying, PCB Assembly and testing.

## OUR CUSTOMERS

Miyako

Cosmos®

SANKEN

SHARP

TOA

SMART METER  
2WAY  
2WAY

三星电气  
SANXING ELECTRIC

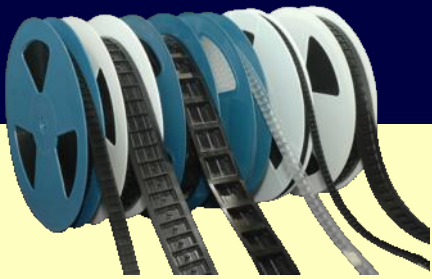
DMT

LELCO  
MANUFACTURING

DELAMETA BILANO  
ENCOSYS

prasimax  
Sales Through Innovation

PT. TRIDAYA DINAMKA ELEKTRINDO



## MATERIALS SUPPLY

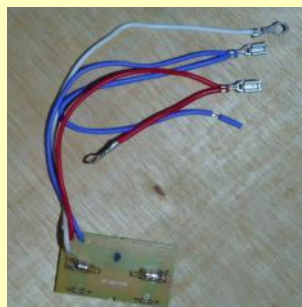
The indispensable component in the assembly of electronic module devices are PCB, resistor, capacitor, semiconductor, tin, wire, solder mask (stencil), both Pb and Pb-free.

To simplify and expedite the assembly process of the electronic module device, we are able to assist our customer by supplying the components above (Component Sourcing).

Thus, the customers are only required to provide a circuit diagram of electronic module, and they will get the product in according to their wishes and expectations.



## WIRE CRIMPING



## WIRE HEAT SHIELD



PRODUCTS  
**OUR PRODUCTS**

**Xstream Light**

*lebih terang dari yang terang*



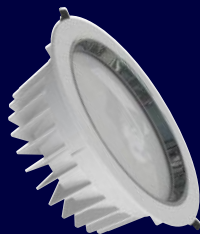
**BULB LED**

ALUMINIUM CASE  
5W, 7.5W, 9W, 12W, 21W  
100 ~ 265 VAC  
50Hz / 60Hz



**TUBE LIGHT LED**

T8 & FRAME  
10W, 20W  
100 ~ 265 VAC  
50Hz / 60Hz



**DOWNLIGHT LED**

ALUMINIUM CASE  
10W, 15W, 25W  
100 ~ 265 VAC  
50Hz / 60Hz



**automation**  
POWER CONTROLLER

3 Phase, Multi Zone Power Timer  
Controller, Accurately Control Electricity  
Bill, Remotely Monitor

**OUR CUSTOMERS**

**MORADON**  
LED LIGHTING

**Alfamart**  
*Belanja puas, harga pas*

**SANKEN**

**BCA**  
GRUP BCA

We are well aware that in order to produce high-quality products and maintain customer satisfaction, we require advanced technology to aid in the production process. That is why we keep on monitoring the development and technological advances in electronics.

We infused robotics technology into our production process. The machines that are operated are automatic machines that adhere to the instructions of the computerized program.

By implementing this advanced cutting edge technology and with support of our highly experienced operator, our machines are able to work effectively and efficiently to ensure highest quality of products.



## Chip Moulder

The Robot or machine is programmed to mount SMT components simultaneously. With high speed and precise accuracy, this machine is able to work very effectively and efficiently.



## I-Systems

The I-Systems is used to analyze the outputs of SMT with high speed and precision. I-Systems are able to detect mismatched productions by cross-checking with a predetermined reference. (e.g The components are not mounted, the components do not match the diagram or less pasta). With I-Systems, all of these deficiencies can be detected with great accuracy.



## Wave Solder

Automatic soldering machine with high production capacity and environmentally friendly (Pb-free).



## Automatic Wire Cutting and Twisting

The wire stripping and twisting machines are especially designed to process multi-strand wires with cross-section up to 2.5mm<sup>2</sup>.



## Wire Crimping Machine

The wire crimping machine is comprised of wide applications the are able to fit vertical and horizontal molds. This is a one machine fits for all terminal types by simply changing the crimping die.



# PT. GLOBAL JAYA ELEKTRONIK



## Head Office

Jalan Raya Cukanggalih No. 7  
Kampung Ranca Buntu  
Kecamatan Curug  
Kabupaten Tangerang 15810  
INDONESIA

t: +62 21 58980882

f: +62 21 58981008

w: [www.gje.co.id](http://www.gje.co.id)

## CONTACT US

### DODDY

[doddy@new-gje.id](mailto:doddy@new-gje.id)

+62 812-9790-0028

### NURHAYATI

[nurhayati@new-gje.id](mailto:nurhayati@new-gje.id)

+62 859-6646-3281





*"the customer satisfaction will always motivate us to  
provide the best services"*